

# Newsletter EAP *November 2000*

Airport Basel (Switzerland)-Mulhouse (France)-Freiburg(Germany)



airtraffic promotion group – a non-profit organization supported by professionals working in the field of aviation

## WHY ?

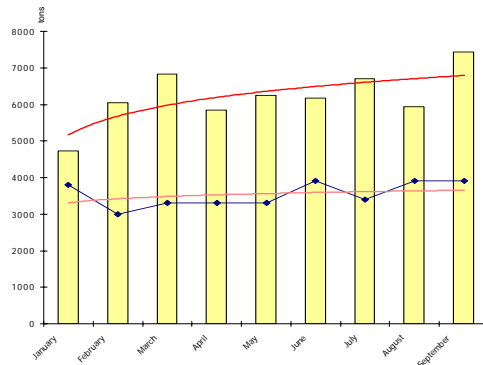
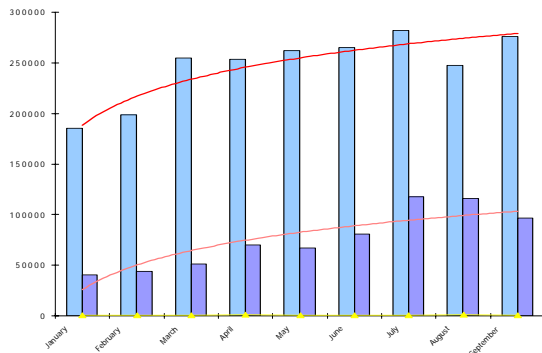
AIRPORTS WITH PASSENGER VOLUMES CLOSE TO FOUR MILLION TRAVELLERS SHOULD BE VERY PRESENT IN THE NEWS AT ALL LEVELS AND IN THEIR OWN INTEREST SO TO SPEAK.

THE GROUP STRONGLY BELIEVES THAT STAFF WORKING WITH AIRPORTS, AIRLINES, FORWARDERS AND THE PUBLIC DESERVE RICH ACCESS TO THE WORLD OF COMMERCIAL AVIATION, AND ESPECIALLY TO THE ACTIVITIES AT THE EUROAIRPORT. A LOOK AT THE RICH NEWS BULLETIN CAN MAKE THE READER EAGER TO LEARN MORE ABOUT THIS PLATFORM. CARRYING THE NEWS TO THE PUBLIC IS DEFINITELY THE CORE ISSUE WHICH WE WANT TO APPROACH FIRST AND FOREMOST. WHAT IS BEING CONSIDERED INTERESTING IS THE ULTIMATE QUESTION ! IF WE CAN COMMUNICATE WHAT THIS AIRPORT IS ALL ABOUT, THEN WE ARE ON A GOOD TRACK.

## STATS SEPTEMBER 2000 (PASSENGER / CARGO)

SCHEDULED PASSENGERS	275'667	+9%
CHARTER PASSENGERS	96'449	-3%
TOTAL INCL. OTHERS	372'881	+5%
<b>TOTAL JAN-SEP 2000</b>	<b>2'915'207</b>	<b>+7%</b>

FLOWN AIRCARGO	7'437	+44%
TRUCKED AIRCARGO	3'900	
TOTAL AIRCARGO	11'337	+21%
<b>TOTAL JAN-SEP 2000</b>	<b>89'720</b>	<b>+11%</b>



## 10 HIGHLIGHTS OF THE RAMP DURING THE MONTH OF SEPTEMBER 2000

1.9.00	AIR STAN	IL-76TD	RA-76842	18.9.00	HEAVYLIFT	BELFAST	G-BEPS
2.9.00	AIR NOVE	AN26	LZ-NHA	21.9.00	FRENCH AIR FORC	A-310	F-RADB
4.9.00	PSKOVAVIA	AN26	RA-26044	28.9.00	KLM	MD11	PH-KCF
9.9.00	AERO LYON	DC-10-30	F-BTDD	29.9.00	HELIOS A/L	B737-4Y	5B-DBG
12.9.00	BALKAN	AN12	LZ-BAF	30.9.00	VEGA AIRLINES	AN12	LZ-VEC

THIS IS A SMALL SELECTION OF MOVEMENTS DURING THE MONTH OF SEPTEMBER, NEED ALL DETAILS, **LET US KNOW !**

## NEWS ON THE RAMP

A MD-11 FREIGHTER (GEMINI AIRCARGO) AND A BOEING 757-300 (CONDOR) HAVE RECENTLY GIVEN THEIR FIRST DEBUT AT THE EUROAIRPORT.

BOTH AIRCRAFT WERE ON COMMERCIAL ASSIGNMENT. GEMINI DEPLOYED THE MD-11F TO A CARGO FLIGHT FROM CHICAGO TO BASEL (28<sup>TH</sup> OCTOBER). CONDOR'S B757-300 CARRIED TOURISTS FOR THEIR AUTUMN VACATION TO PALMA DE MALLORCAB (OCTOBER 27<sup>TH</sup> 2000).

THE FIRST COMMERCIAL FLIGHT OF THE NEW HOTELPLAN (BALAIR) B757-200 WENT AIRBORNE ON NOVEMBER 1<sup>ST</sup> 2000 TO SHARM EL SHEIK VIA LUXOR IN EGYPT.

## INTERNET @CCESS

TRY FOLLOWING EUROAIRPORT RELATED WEBSITE.....

**WWW.EUROAIRPORT.COM** (OFFICIAL WEBSITE)

Page 1/2

# Newsletter EAP *November 2000*

Airport Basel (Switzerland)-Mulhouse (France)-Freiburg(Germany)



## CHARTER TRAFFIC WINTER 2000/2001 (END OF OCTOBER 2000 TO END OF MARCH 2001)

<u>AIRLINE</u>	<u>DESTINATION</u>	<u>AIRCRAFT</u>	<u>DAY OF OPS</u>
AFRICAN SAFARI AIRWAYS BALAIR (NEW)	MOMBASA	DC-10-30	1...5..
	LAS PALMAS	B757-200	1...6.
	SHARM EL SHEIK	B757-200	.23...
	LUXOR	B757-200	..3....
	GOA VIA SHARJAH	B757-200	...4...
	HURGHADA	B757-200	.....7
	ARRECIFE	B757-200	1.....
BRITANNIA	PUERO PLATA	B767-300	.....6.
	PUNTA CANA	B767-300	.2....
	VARADERO (CUBA)	B767-300	.....7
CROSSAIR	DAKAR (NEW)	MD-83	....5..
	HURGHADA	MD-83	....6.
	FUNCHAL (MADEIRA)	MD-83	...4...
	SHARM EL SHEIK	MD-83	....6.
HAPAG LLOYD	FUERTEVENTURA	B737-400	1.....
	ARRECIFE	B737-400	.2....
	PALMA DE MALLORCA	B737-400	..3...7
	TENERIFFA	B737-400	....5..
	LAS PALMAS	B737-400	....67
	OTHER DESTINATIONS VIA MUNICH		...4...

OTHER AIRLINES OPERATING WEEKLY FLIGHTS ARE:

AIR ANATOLIA, AIR BELGIUM, AIR EUROPA, AIR MALTA, ANEX AIRLINES, FUTURA, LOTUS AIR, NOUVELAIR, ONUR AIR, ROYAL AIR MAROC, SPANAIR, TUNIS AIR.

**MORE DETAILS ? LET US KNOW AND WE WILL SEND YOU THE COMPLETE PROGRAM OF THIS WINTER SEASON 2000/2001**

## NEWS - CHARTER THIRD QUARTER 2000

THE EUROAIRPORT'S LONG CHARTER SEASON (12 MONTHS) WITH THREE DIFFERENT HOLIDAY SCHEDULES IN FRANCE, GERMANY AND SWITZERLAND HAS CONVINCED **HOTELPLAN** TO DEPLOY A BRAND NEW BOEING 757-200ER TO VARIOUS AIRSERVICES.

**FTI** – ANOTHER IMPORTANT LAUNCHING PARTNER – HAS AGREED TO HOLD SEAT CONTINGENCY TO VARIOUS DESTINATIONS (HURGHADA, LAS PALMAS, SHARM EL SHEIK).

THE LONGRANGE SECTOR ACCOUNTS FOR SIX WEEKLY AND TWO TWICE WEEKLY DEPARTURES (PUNTA CANA AND VARADERO). NEW DESTINATIONS ARE DAKAR, GOA, KATHMANDU AND SHARJAH.

THE MEDITERRANEAN AND ATLANTIC TOURIST RESORTS REMAIN AT THE PRESENT WINTER HIGH ADDED WITH SUCH EXOTICAS LIKE TAMANARRASET (ALGERIA) AND SHEBA (LYBIA) FOR DESERT TREKKING.

## NEWS – CARGO TRAFFIC THIRD QUARTER 2000

**SWISSCARGO AND MASKARGO HAVE AGREED** TO REPLACE ATLAS AIRCARGO ON THE TWICE WEEKLY KUALA LUMPUR FREIGHTER SERVICE BY A MASKARGO B-747-200F. THE CHANGE TOOK PLACE ON NOVEMBER 2.

HEAVY DELAYS BY THE ATLAS-OPERATION REQUIRED SWIFT ACTION. THE FIRST TWO FLIGHTS BY MASKARGO WERE REPORTED TO BE ON TIME.

MEANWHILE THE ROUTING OF ALL KUALA LUMPUR BOUND FREIGHTERS WILL TOUCH DOWN AT SHARJAH MASKARGO'S NEW HUB IN THE MIDDLE EAST.

**KOREAN AIR CARGO IS FORCED** TO REDUCE PAYLOADS ON THE TWO WEEKLY SEOUL-BOUND SERVICES BY ROUGHLY 30%. THE PAYLOAD REDUCTION IS THE RESULT OF SCARCE JET FUEL SUPPLIES AT TASHKENT AIRPORT. THE SHORTAGE IS EXPECTED TO LAST UNTIL NOVEMBER 17. THE AIRLINE IS IN A CODESHARING AGREEMENT WITH SWISSCARGO.

**DHL HAS STARTED** A SECOND FLIGHT INTO ITS EUROAIRPORT HUB. THE AIRCRAFT (A CONVAIR 580 F) IS SCHEDULED TO ARRIVE AT 6 AM AND TO LEAVE AT 10.15 PM. THE SERVICE IS OPERATED SEVERAL TIMES A WEEK. MORE DETAILS ARE TO FOLLOW.

## INTERNA

**WE WOULD HIGHLY APPRECIATE YOUR COMMENTS. ANY BULLETIN, AND ESPECIALLY THIS ONE IS READY TO BE UPDATED AT ANYTIME.**