



# NewsletterEAP

October 2005

Airtraffic Promotion Group Basel – [www.aeronet.ch](http://www.aeronet.ch) – [eapnews@gmx.ch](mailto:eapnews@gmx.ch) – Phone # (+ +41) 61 302 57 75

## TRANSFERBUS SCHEDULE ZURICH BUS TERMINAL <-> BASEL-AIRPORT

### ZURICH departures (day 1 to 7)

- 04.00h to Berlin, Hamburg, Luxor, Malaga, Naples, Palma, Paris
- 07.15h to Antalya, Arrecife, Hurghada, Lisbon, London-Luton, Paris, Prague, Puerto Plata, Teneriffa
- 12.15h Amsterdam, Bratislava/Vienna, Goa, Fuerteventura, Lamezia-Terme, Las Palmas, Liverpool, London-Stansted, Paris, Rome
- 18.30h to Berlin, Bratislava/Vienna, London-Luton, Mombasa, Sharm el Sheik

### BASEL departures (day 1 to 7)

- 05.30h matching with no arrivals
- 10.15h from Antalya, Berlin, London-Luton, Palma, Puerto Plata, Sharm el Sheik
- 14.45h from Berlin, Goa, Lamezia-Terme, Las Palmas, Malaga, Naples, Prague, Puerto Plata
- 22.00h from Berlin, Bratislava/Vienna, Hamburg, Hurghada, London-Luton, Teneriffa

The service has been welcomed by the travel market since its introduction on 28 September. Loadfactors have been way above the projected passenger targets of four boardings on each leg marking the break-even for this operation. Presently, 100 seats are available on a daily basis provided by a mini-bus. Additional services might be an option soon to come.

Onward destinations have been listed after checking the value for passengers starting or ending their journey in Zurich with carriers such as African Safari, Belair, EasyJet, Haag Lloyd, Hello, Sky Europe and Sun Express.

As there is no competition on the feeder route to Basel Airport, Transferbus may pick up a large enough slice of the market to impress other operators. Unique Zurich Airport and SWISS have benefited from the Basel Area as traditional feeder of flights departing and arriving at Zurich. Both Zurich-Airport and SWISS are either downplaying the potential impact of Transferbus or airing concerns about a possible loss of market shares to Basel. Reversing the feeder practice in favour of Basel Airport had become an alternative offered by Crossair until its forced break-up by SWISS which is primarily dominated by ex-Swissair staff and Aeropers, Swissair's pilot union.

## CHARTER PROGRAMME WINTER 2005 (all subject to change on short notice)

Airline	Destination	Day	Tour Operator	Aircraft
AFRICAN SAFARI	MOMBASA	4	AFRICAN SAFARI CLUB	A310-300
AIGLE AZUR	HURGHADA	4	ETAPES NOUVELLES	A321
AIR EUROPA	PALMA	7	UNIVERSAL	B737-800
AIR HORIZONS*	LA ROMANA	4	NOUVELLES FRONTIERES	B767-300
	LUXOR/CAIRO	7	ETAPES NOUVELLES	B757-200
AIR MED	HURGHADA/LUXOR	6	VOYAGES FRAM	A321
	Via MARSEILLE to Burkina Faso, Niger,	1/5/6/7	POINT AFRIQUE	A320
ATLAS BLUE	MARRAKECH	1/6	ETAPES NOUVELLES/STARTER	B737-400
BELAIR	PUERTO PLATA	3/6	FTI/HOTELPLAN/STARTER	B757-200
	GOA	4	FTI/HOTELPLAN/STARTER	
	SHARM EL SHEIK/HURGHADA	5/7	FTI/HOTELPLAN/STARTER	
GERMANIA	LAMEZIA TERME	7	FTI/FLIEG-AB-BASEL.DE	F100
HAPAG LLOYD	FUERTEVENTURA	1	TUI	B737-800
	PALMA	1/3/5	TUI	
	TENERIFFA/ARRECIVE	2/6	TUI	
	LAS PALMAS	7	TUI	
HELLO	DAKAR	5	STARTER/NOUVELLES FRONTIERES	MD90
	HURGHADA/LUXOR	6	STARTER	
	DJERBA/MONASTIR	1	STARTER	MD90
IBERWORLD	LAS PALMAS	7	STARTER	A320
NOUVELAIR	DJERBA	6	ETAPES NOUVELLES	A320
SPANAIR	PALMA	7	UNIVERSAL	MD83
	TENERIFFA	7	STARTER	A320
TUNIS AIR	DJERBA/MONASTIR	6	STARTER/NOUVELLES FRONTIERES	B737-500



# NewsletterEAP

October 2005

Airtraffic Promotion Group Basel – [www.aeronet.ch](http://www.aeronet.ch) – [eapnews@gmx.ch](mailto:eapnews@gmx.ch) – Phone # (+ +41) 61 302 57 75

**AWAY ON BUSINESS – BUT AT THE RIGHT PRICE** – Low-cost carriers and budget hotel chains have sharpened the minds of established airlines and hotel operators as cost is particularly important when planning a short-haul trip. Rising (fuel) costs have not hit demand. As a result of low-cost airlines big carriers in Europe are trying to focus on long-haul routes rather than on intra-European routes. Companies are keen to keep their costs down and to get better value for value for their money. internet booking will grow from \$172bn to \$329bn by 2010. Much of that growth is leisure-related but corporate travel will also play a big part as companies look to use web technology to book cheaper trips for their executives.

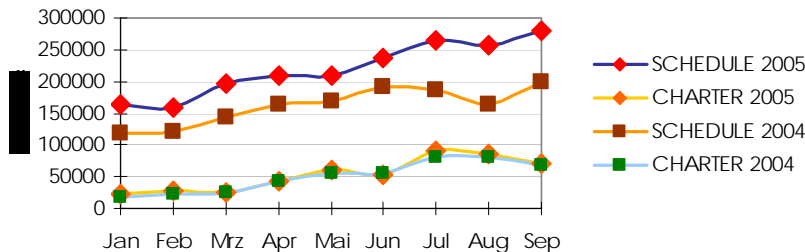


**Pakistan Airlines Cargo starts flying !!**  
TC-MNN being loaded – Picture taken by ANDREAS HERTER



**Korean Air Cargo back again !!**  
HL7437 touching down on RWY16 – Picture taken by JOEL VOGT

Passenger figures (Scheduled flights)



**CARMAKER PEUGEOT** contracted City Airlines of Sweden to fly a shuttle between EuroAirport and Vigo Spain once a week. Also, fixed seat contingents have been taken on flights to Bratislava from Sky Europe.

Association **LE POINT** is back with flights to Africa. The association had been a champion of cheap fares for its members.

**PAKISTAN CARGO** has started flights to Karachi. [www.worldairnews.ch](http://www.worldairnews.ch)

## TRAFFIC REPORT

Total Passengers		
September 2005 only	350,834	+ 31%
<b>Year to date 2005 (Jan-Sep 2005)</b>		
Scheduled Passengers	1,976,322	+ 36%
Charter Passengers	476,503	+ 7%
<b>Total Passengers</b>	<b>2,461,064</b>	<b>+ 29%</b>
General Airfreight in tons	4,786	- 28%
Expressfreight in tons	17,771	- 1%
<b>Total Airfreight handled</b>	<b>60,513</b>	<b>- 8%</b>
<b>Total Movements</b>	<b>63,383</b>	<b>+ 7%</b>

Euroairport Basel-Mulhouse-Freiburg  
Total Passenger Figures

