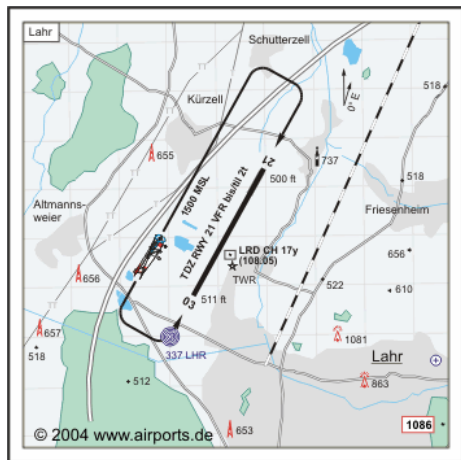




Airtraffic Promotion Group Basel – www.aeronet.ch – eapnews@gmx.ch – Phone # (+41) 61 302 57 75



LAHR Black Forest
RWY21/03: 3,000x45m
Weather Cat I RWY16
Open: 06.00-23.00 hrs.
Terminal Area:
Passengers available
Airfreight available
Handling by Airport
Limited Maintenance
Main Characteristics
Ex-Canadian base can
handle any aircraft
Business Park available
in reach of Europa Park
a special permit to
handle freighters 0
Statistics: no entry

The airports of Frankfurt, Stuttgart and Zurich were always first choice for air-travel for residents in the Upper Rhine whereas Basel-Mulhouse was second in preference. A change of mind took place with a greatly enhanced network Karlsruhe was next to compete for air-travellers. Lahr airfield is also active in putting its name on the airline maps. Applying for a license either as limited or full-service airport is not welcomed by airports such as Karlsruhe. It is part of a dispute among interest groups in Baden-Württemberg.

LAHR is planning business deals with EuropaPark Rust attracting millions of guests annually. The airport is eyeing visitors on tour packages to fill entire aircraft. Permission allowing ad-hoc or regular charter flights is sought.

Australia's Babcock & Brown is in partnership with Lahr providing funds and know-how for this venture.

A court decision (Bundesverwaltungsgericht) is now awaited. Brussels may represent the last resort of clearing the way. Lahr has grown suspicious about the state government's handling of its request and calls it partisan. Indeed, Stuttgart Airport holds 66% of shares in Karlsruhe.



Picture taken by Florian Sindermann
www.baden-airpark.de

KARLSRUHE-Baden
RWY03/21: 2,980x45m
Weather Cat I RWY21
Open 06.00-23.00 hrs.
Terminal Areas:
Passengers 11,000m2
Cargo Apron 10,000m2
Handling by Airport
Limited Maintenance
Main Characteristics
former US airforce base
Business Park available
€114 mn. investment
Key figure 2005
0.7 million passengers



Picture taken by Christian Galliker
www.euroairport.com

EuroAirport Basel-
Mulhouse-Freiburg
RWY16/34 3,900x60m
RWY26/08 1,820x60m
Weather CatIII RW16
Open 05.00-24.00 hrs.
4 Passenger Departure
Halls in service
Airfreight 29,000m2
AviaPartner/Swissport
Aircraft Handling
Jet/Swiss maintenance
Key figures 2005
3.3 million passengers
81,000 to. in air-cargo

Karlsruhe's hopes are resting with the courts turning down Lahr's request as it sees a risk to its investments.

Truly, Lahr would take aim at a market of 2 to 5 million people living within 1-2 hours of driving to the next airport given any particular destination.

Of course, all airports see a market place for themselves, knowing that a critical mass is essential to sustain the business. A return on investment depends on annual traffic through-put of about 1.5 million passengers to see a (first) positive operating result.



Picture taken by Christophe Barbe
www.cci.fr

STRASBOURG
RWY05/23: 3,270x45m
Weather CatIII RWY23
Open: 06.00-23.30 hrs.
Terminal Areas:
Passengers: 25,000m2
Airfreight 11,000m2
Office Space 1,700m2
Main Characteristics
Chamber of Commerce
as airport operator
High-speed trains from
Paris in 2007 may clip
dominant Paris-market
Key figure 2005
1.9 million passengers

Lahr is comparable to Basel-Mulhouse which was confronted with a boycott of Swissair during its market reign.

The co-operation with Europa Park Rust has many critics finding it hard to see a market of scale to fill aircraft with visitors to the theme-park.

EuroAirport and Karlsruhe see Rust as integrated part of their geographic turf which is always a matter of preference in choosing the flights and destinations the passengers.



EUROAIRPORT SUMMER SCHEDULE 2005 (weekly services and estimated seat availability in each direction)

AIGLE AZUR	to	Constantine	3	510	EASYJET to	Alicante	7	1,092	
AIR ALGERIE		Constantine	1	135		Amsterdam	7	1,092	
AIR FRANCE		Bordeaux	12	600		Barcelona	7	1,092	
		Clermont CFE	5	150		Berlin SXF	20	3,120	
		Lyon	16	560		Hamburg	12	1,872	
		Paris CDG	28	2,800		Istanbul SAH	4	624	
		Paris Orly	41	6,150		Lisbon	7	1,092	
		Toulouse	6	210		Lisverpool	7	1,092	
ARIA		Rennes	10	200		London LTN	14	2,184	
AUSTRIAN Arrows		Vienna	18	900		London STN	7	1,092	
BRITISH AIRWAYS		London LHR	21	2,835		Madrid	7	1,092	
IBERIA		Barcelona	7	350		Malaga	7	1,092	
LUFTHANSA		Düsseldorf	12	840		Naples	5	780	
		Frankfurt	35	2,940		Nice	7	1,092	
		Munich	32	1,660		Palma	7	1,092	
SCANDINAVIAN		Copenhagen	17	850		Paris CDG	12	1,872	
SUN EXPRESS		Antalya	2	360		Prague	5	780	
SWISS		Amsterdam	12	1,140		Rome CIA	7	1,092	
		Brussels	12	1,140					
		London LCY	17	1,615	SKY EUROPE	Bratislava	4	540	
TURKISH		Istanbul	4	680					
TWIN JET		Marseille	10	200					
Flights/seats network carriers			321	26,825	Flights/seats low-cost carriers			153	23,784



Have a taste of a new generation of super wide-bodies at EuroAirport Airbus A380

Picture taken by Ralph Kunadt

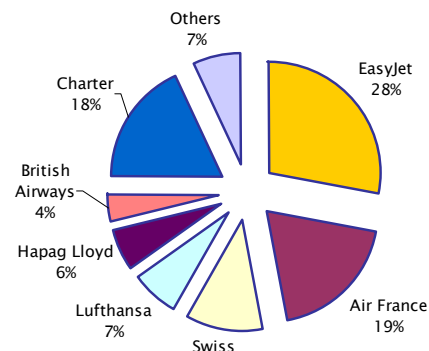
Exotic visitor from the Americas ready to discharge meat imports from Brasil B767-300F

Picture taken by Carlos A. M. Doria



MALAYSIAN's cargo arm **MASKARGO** could face some serious troubles after flight cancellations and delays at EuroAirport of 72 hours at times. A big pharma company is considering in earnest to blacklist the carrier barring it from any airfreight. Prior to the second launch at EuroAirport in 2004 MASKargo faced difficulties in tracking and tracing at Kuala Lumpur leading to the loss of cargo at its hub.

Airline market shares at EuroAirport in 2005



TRAFFIC REPORT

Total Passengers February

Scheduled Passengers	216,002	+35%
Charter Passengers	18,893	-30%
Total Passengers	236,020	+26%

General Airfreight in tons	555	-29%
Expressfreight in tons	1,894	+ 1%
Total Airfreight handled	6,949	+ 6%

Total Movements	5,403	+ 0%
freighter movements	268	- 3%

Other key figures of EasyJet at EuroAirport

Employment 98 full-time jobs: 31 pilots, 65 flight attendants

100 positions
Economic growth:

1 cabin crew manager, 1 team manager
Handling, Maintenance
60% incoming traffic for the Regio TriRhena
Expenditure per incoming passenger €300
1'000 additional jobs in the tourism industry

Passenger development:
Business destinations: 2004: 257,916/2005: 951,000/2006: 1,6mio
Leisure destinations: Berlin, Hamburg, London
France, Italy, Spain (incoming/outgoing)
Targeted catchment area: a population of 4 million people